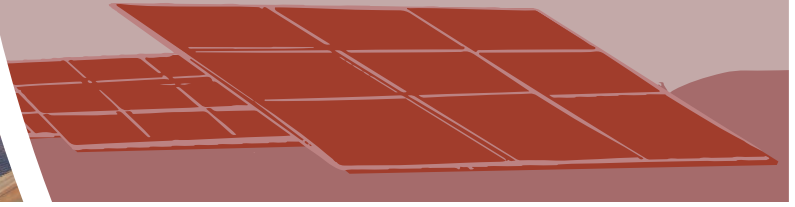




MATLA A BOKONE
SOLAR



OCTOBER 2020 NEWSLETTER



MATLA A BOKONE - A TRULY LOCAL NAME

In an exciting community activation campaign, hundreds of people from the local Sol Plaatje municipality communities were invited to participate in a campaign to choose a new name for the solar project. **Matla A Bokone**, meaning '**Power of the Northern Region**', in Setswana, was the winning name, submitted by 28-year-old Khotso Mathakgane, from Chris Hani Park, in Kimberley.

About the winner, Mr Mathakgane: He has been living in the Sol Plaatje area for most of his life, and studied IT at CPUT, in Bloemfontein, after finishing school at St Boniface High School. He chooses to spend his free time with his two small children and loves a good game of chess, which he is helping to teach to youngsters in his community.

The inspiration for his submission was drawn from the geographical location of the solar plant and much needed power by the people of the North. Involving the community in choosing a name for the solar plant is a first step in the 20-year operations strategy to ensure participatory inclusion of local communities in the design and implementation of Socio-Economic and Enterprise Development initiatives.

Winner of the new solar project name campaign. Mr Khotso Mathakgane ▶



SIX STEPS TO WASHING YOUR HANDS

The Department of Health recommends washing your hands with soap for 20 seconds, to help slow the spread of coronavirus.



Use soap



Rub palm to palm
with fingers



Rub tips of fingers



Rub each wrist



Rinse your hands



Dry your hands

STAY SAFE

#CoronaVirus

www.nicd.ac.za

www.health.gov.za

South African COVID-19
Resource Portal:

www.sacoronavirus.co.za



matlaabokonesolar.co.za

✉ info@matlaabokonesolar.co.za



Like our Facebook Page | **RenewEnergyCo**

MATLA A BOKONE WELCOMES NEW CLO

Welcome to Lesego Mosiane, who has joined Matla A Bokone Solar as the new Community Liaison Officer during August 2020.

In her new role, Lesego is the bridge between the solar project and the surrounding beneficiary communities that include Barkly West, Riverton, Kimberley, Kimberley Central, Greenpoint, Galeshewe, Roodepan, Platfontein, Holpan, Delporthshoop, Windsorton, Ritchie, and Boshof.

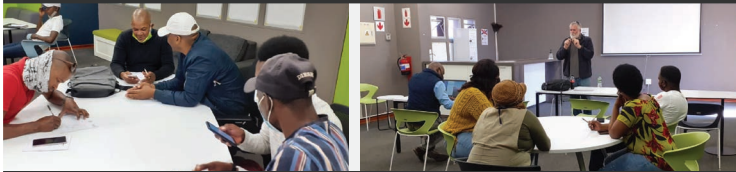
Bringing strong experience in community development and upliftment, Lesego is originally from Kimberley and knows the community well.

"It is my job to understand the issues facing community towns to ensure holistic management of development initiatives and to safeguard the partnerships with our stakeholders."



New Community Liaison Officer, Lesego Mosiane

LOCAL SMMES BENEFIT FROM ENTERPRISE DEVELOPMENT PROGRAMME



First Interactive Meeting with the 22 Entrepreneurs, run by Angels Resource Centre.

Matla A Bokone Solar's Enterprise Development Programme kicked off in August, at Galeshewe SMME Village, with 22 local entrepreneurs joining the first interactive meeting, run by Angels Resource Centre.

The local SMMEs will continue to receive support and mentorship until early 2022, after which they will be formally honoured at an Enterprise Development graduation ceremony.

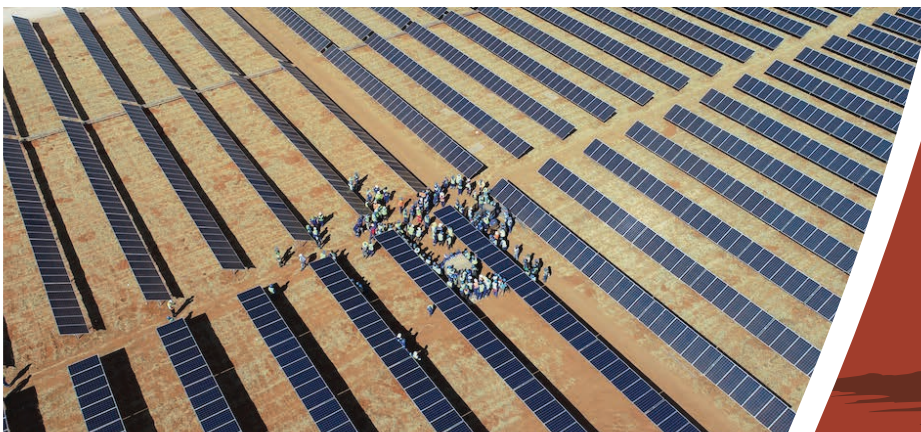
Drongfontein Communal Property Association, Benedict Mamapula, had this to say about the programme: "We are extremely happy with the Enterprise Development Programme so far, the approach is to empower entrepreneurs, and takes each individual's needs into account."

2021 SCHOLARSHIP APPLICATIONS ARE NOW OPEN



Grade 12 learners are invited to apply for 2021 tertiary study scholarships. Applications are to be submitted through an online platform, through Matla A Bokone Solar's website.

The Scholarship Programme aims to provide tertiary education funding for youth within a 50km radius of Matla A Bokone Solar PV Facility. Scholarship applications toward University Degrees and TVET National Diplomas are open.



Matla A Bokone Solar PV Facility
Riverton, Kimberley, 8301

Office Hours:
Monday – Friday: 8h30am to 17h00pm

Community Liaison Officer
Lesego Mosiane
079 492 5710
lesego.mosiane@eimsafrica.com